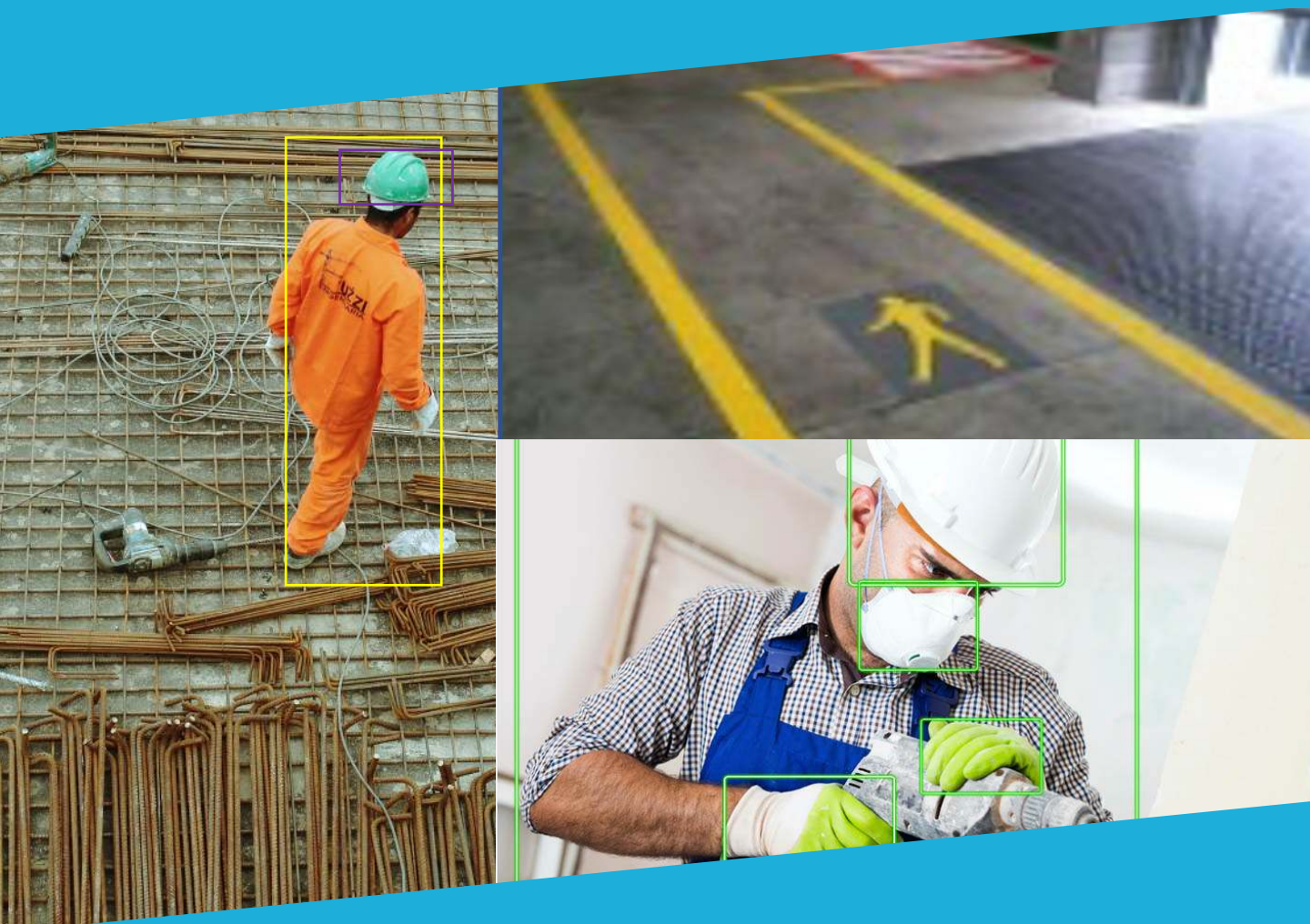


Scailable.

# Worker safety monitoring.



Scalable.

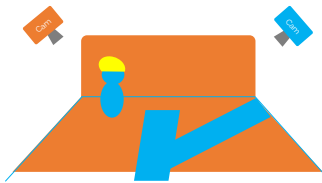
# Worker safety monitoring.

## Fully GDPR compliant worker safety monitoring.

You want your workers to be safe at all times. To ensure worker safety you need to know how many people are in each factory area or confined space, you need to be sure workers are wearing their PPE, and you need to ensure that nothing is blocking the walking corridors..

### A complete safety solution

Our unique AI safety solution enables you to use advanced AI vision models to monitor your worker safety in a fully GDPR compliant manner. We use off-the-shelf IP cameras as our input, and conduct advanced AI vision analysis on the edge. The images are processed on location and you have no hidden cloud costs.



- Count and locate your workers in various spaces. Optimized for confined spaces.
- Check Personal Protective Equipment and helmet wearing.
- Check obstructions on walking paths.
- Guard against trespassing and ensure the floor safety plan is respected.



### GDPR compliant monitoring

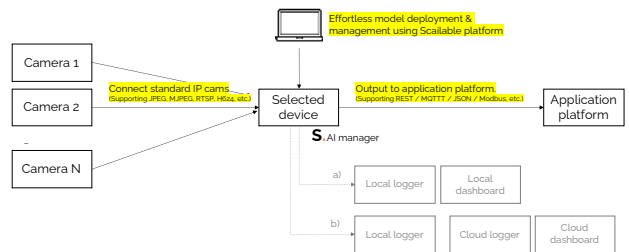
Our worker safety solution is fully GDPR compliant; all data processing happens on-side (thus without hidden cloud costs), and no privacy-sensitive data is submitted to the cloud..

### Extendable & modular

Want to inspect whether your workers are wearing the right helmet? Or tailor for your company logo? We can do that without changing your setup.

## Technical details

Using advanced AI models running on selected edge devices we enable our modular and secure edge-AI worker safety solution. We can run on virtually any IPC / industrial gateway to enable local monitoring.



- **Suggested local processing hardware:** Advantech 42/44xx series or MIC-710AIL.
- **Suggested cameras:** Our worker safety solution works with virtually any industrial camera providing JPEG, MJPEG, RTSP, H264, and a variety of other output formats. We ensure easy compatibility with the Dahua IPC-HDWxxx series and the Vivotek IB9380-H, CC9380-HV, FD9380H, IT9380-H, and FE9380-HV.
- High accuracy (average precision) and easily retrained for your specific purposes.
- Supporting multiple output formats and easy integration with your application platform.

### Benchmarking:

**ADVANTECH**

Functionality	ICR42xx	MIC-710
People count	44 FPS	212 FPS
PPE inspection	32.0 FPS	120 FPS
Localization	42 FPS	198 FPS

**Computational example:** on a single IPC (the Advantech MIC-710AIL) we can easily process over 6 video streams in real time (> 15FPS).

## Get started now.

Our software is plug & play. To get started right away, please contact us at [go@scalable.net](mailto:go@scalable.net), or gives us a call at +31 (0) 6 42499591.

Get started at:  
<https://www.scalable.net/>

Or contact us at:  
[go@scalable.net](mailto:go@scalable.net)